

Sar1a

Catalog Number: 21090

Gene Symbol: SAR1A

Description: Anti-Sar1a Rabbit Polyclonal Antibody

Background: Small GTPases are a super-family of cellular signaling regulators. Sar1 is a member of these small GTPases. Sar1 functions as a molecular switch to control protein-protein and protein-lipid interactions that direct vesicle budding from the ER.

Immunogen: A synthetic peptide from the internal region of human Sar1a protein

Tested applications: ELISA, WB, IHC

Recommended dilutions:

ELISA 1:1000-1:5000

WB 1:100-1:2000

IHC 1:100-1:1000

Concentration: 0.2 mg/ml

Host: Rabbit

Clonality: Polyclonal

Purity: Purified from antisera

Format: Liquid

Storage buffer:

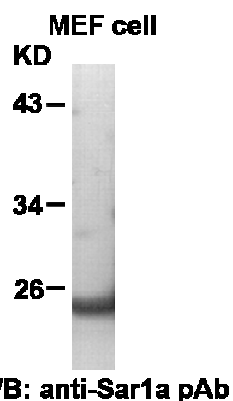
Preservative: no

Constituents: PBS (without Mg^{2+} and Ca^{2+}), pH 7.4, 150 mM NaCl, 50% glycerol

Species Reactivity: Sar1a antibody recognizes Sar1a proteins of vertebrates.

Storage Conditions: Store at $-20^{\circ}C$. Avoid freeze / thaw cycles

Western blot:



Western blot analysis of Sar1a proteins. MEF whole-cell lysates were used for Western blot with anti-Sar1a rabbit polyclonal antibody (Cat# 21090).